

NOTHING ELSE HAS THE FLEXIBILITY OF REDWELL

A major advantage of Infrared heating systems is that they save large amounts of energy. Additional and equally impressive advantages are easy and flexible installation, lifelong maintenance-free operation, and good design.

The heating units can be installed on walls or ceilings, using concealed brackets. All you need is a power socket.

INFRARED IS HEALTHY HEAT

We humans have evolved with the capacity to absorb infrared heat, which in turn has a beneficial effect on our immune system. Infrared waves warm us beyond the skin. Our products are absolutely safe and have TÜV certification. They are also IGEF certified as "low electrosmog". (www.elektrosmog.com)



TO KEEP A PROMISE...

With the purchase of a REDWELL infrared heater you are acquiring a product produced in the most modern production facilities in Austria which comply with all quality and safety standards. Furthermore, our heaters have the distinction of "Universal Design", an award for products which are technically safe,

easy to use and long-lasting, and which keep their aesthetic and attractive appearance for generations. Thereby, we are the first and only producer of infrared heaters to bear this title. With a certified heater from Redwell, you have a high quality and safe product for everyday use. *This is our promise.*



...WE FULFIL IT.

As we believe in our products and also want to document for you that with a Redwell infrared heater you are acquiring an outstanding product, we offer you a warranty of 60 months from the date of purchase on of all of our Redwell infrared heaters.

Because with REDWELL you can be sure.

Copyright August 2011
All rights reserved!



REDWELL MANUFAKTUR GMBH

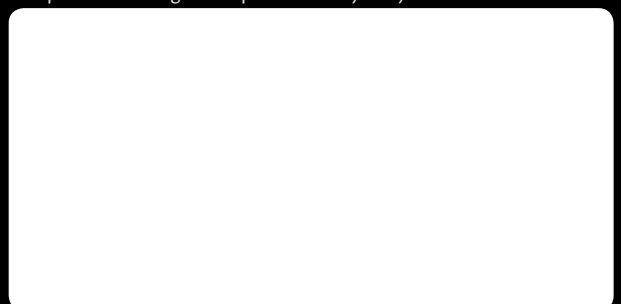
Am Ökopark 3, A-8230 Hartberg
T: +43 3332 61 105-0, F: +43 3332 61 105-14

Firmensitz: Hartberg • UID: ATU50251604
Landesgericht für ZRS Graz • FN.: 199694 v

Raiffeisenbank Dechantskirchen-Pinggau
BLZ: 38041 • Kto: 8.367 • Swift: RZSTAT2G041
IBAN: AT55 3804 1000 0000 8367

office@redwell.com
www.redwell.com

This product catalogue was presented to you by:



REDWELL

PRODUCT OVERVIEW 2011





HOW DO INFRARED WAVES HEAT?

How is it that the heat from the sun travels millions of miles through ice-cold space and yet still warms us here on earth? The reason behind this phenomenon is electromagnetic waves below the red spectrum of visible light (lat.: infra). These electromagnetic waves cause molecules to oscillate, releasing an energy which is felt as warmth. Unlike shorter waves such as X-rays, for example, infrared waves have a very positive, beneficial effect on humans. Redwell units use the same principle and are therefore an ideal source of warmth.

THE DIFFERENCE IS IN THE AIR

Unlike conventional systems, Redwell heating units heat the walls, ceilings and furnishings and not the air itself. Walls retain heat much longer than air and return warmth to the room. They stay dry, giving mould and mildew no chance to spread. A further advantage lies in the fact that there is no circulation of the air, therefore no dust is raised.

THE ADVANTAGES OF REDWELL INFRARED HEATING



Objects and walls stay dry and radiate warmth

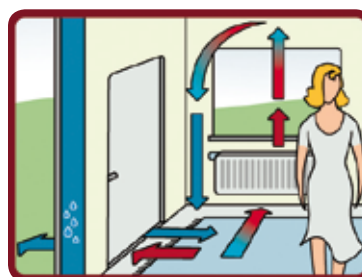


Infrared heat has a beneficial effect on humans



Affordable purchasing price and energy-saving in operation

THE DISADVANTAGES OF CONVENTIONAL HEATING



Damp air condenses on walls, causing the development of mould and mildew and damage to walls and masonry



Air circulation raises dust



Differences in temperature cause draughts

CHOICE OF DESIGN

Redwell heating units are available in 3 surface colours (white, red and blue), as a blackboard, with different motifs, or you can have your own picture or design printed on the heating element. The frame can be ordered in aluminium, wood or white.

MOTIFS



Abstract 4



Abstract 5



Abstract 6



Stone 2



Flower 1



Flower 4



Nature 1



Nature 2



Nature 3



Nature 4



Klimt



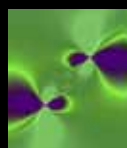
Monet



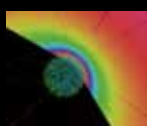
Schiele



Van Gogh



Clerin 1



Clerin 2



Clerin 3



Clerin 4



Clerin 5



Clerin 6



Clerin 7



Clerin 8

Middlewave R400 with all motives (except serie "Clerin") available;
Megawave R1400 is only available with „Clerin 8“.

TECHNICAL DATA

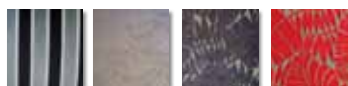
MODEL	SURFACE, APP. SURFACE TEMPERATURE		HEATING ELEMENT	INSTALLATION			PROTECTION	
				WALL	CEILING*	VDE0100**	POWER PLUG	INSTALLATION
Standard-heating panels	Enamelled steel (scratchproof and acid resistant)	ca. 95°C	Partial storage heater	•	•		IP 40	IP 40
Redwell Edition	Heat resistant, printed foil	ca. 95°C	Partial storage heater	•			IP 40	IP 40
Wellina	Steel white, powder coated	ca. 95°C	Partial storage heater	•	•		IP 40	IP 40
Round	Steel white, powder coated	ca. 95°C	Partial storage heater	•	•		IP 40	IP 65
Mirrored panels	Mirror chromated	ca. 95°C	Partial storage heater	•	•		IP 40	IP 65
Glass panels	ESG enamelled	ca. 95°C	Partial storage heater	•	•		IP 40	IP 65
Stand model	Enamelled steel (scratchproof and acid resistant)	ca. 95°C	Partial storage heater				IP 40	IP 40
Shelves 700	Enamelled steel (scratchproof and acid resistant)	ca. 95°C	Partial storage heater				IP 40	IP 40
Sittingwave	Enamelled steel (scratchproof and acid resistant)	ca. 65°C	Partial storage heater				IP 40	IP 40
Power-Heater	Sheet steel	ca. 900°C***	Ceramic radiator			•		IP 20
Rollingwave Rondo	Powder coated	ca. 120°C	Ceramic radiator			•		IP 40

*Accessory: hidden stainless steel brackets

**VDE0100 - The elements have to be installed beyond the reach of people (ca. 3m). Please note safety distances according to the instruction manual.

***Ceramic radiator

UPHOLSTERY



Stripes Leaf 1 Leaf 2 Leaf 3

SURFACES



White Blue Red Bronze Silver Gold



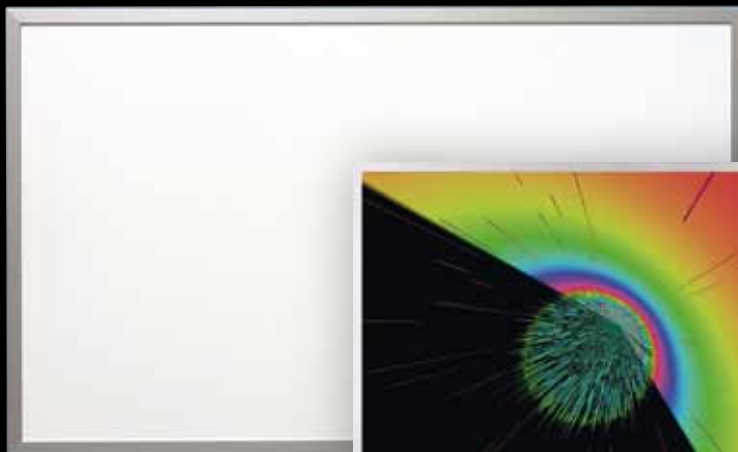
Mirror Glass white Glass black Glass black structured

FRAME

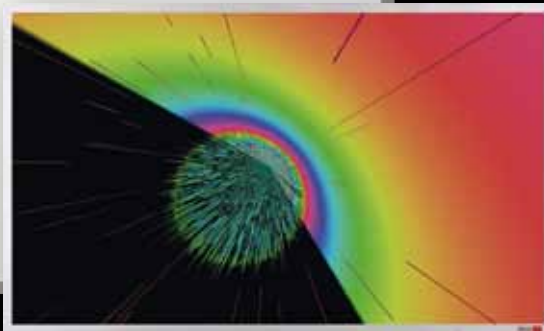


Anodised aluminium White powder coated Alder wood oiled

STANDARD-HEATING PANELS



Panel Heater, aluminium, white colour



Picture Heater, aluminium, clerin 2



Blackboard, aluminium, slate surface

MODEL	WATTAGE	WEIGHT	SIZE	SURFACE						FRAME		
				WHITE	RED	BLUE	BLACKBOARD	PICTURE	CUSTOMER PICTURE	ALU	WHITE	WOOD
Middlewave R400	400 W	6,5 kg	606 x 506 x 17 mm	•	•	•	•	•	•	•	•	•
Tallwave R420	420 W	8,4 kg	1006 x 386 x 17 mm	•	•	•					•	•
Largewave R600	630 W	12,5 kg	1006 x 606 x 17 mm	•	•	•	•	•	•	•	•	•
Longwave R800	830 W	14,4 kg	1606 x 426 x 17 mm	•							•	•
XLargewave R900	890 W	16,7 kg	1206 x 706 x 17 mm	•	•	•	•	•	•	•	•	•
XLongwave R1100	1100 W	19,5 kg	1606 x 606 x 17 mm	•							•	•
Megawave R1400	1400 W	30,5 kg	2006 x 806 x 17 mm	•			•	•	•	•	•	•

GLASS/MIRRORED PANELS



Glass panel, black

Mirrored panel



MODEL	WATTAGE	WEIGHT	SIZE	SURFACE		
				GLASS BLACK/STRUCTURED	GLASS WHITE	MIRROR
Middlewave R400	400 W	10 kg	620 x 520 x 19 mm	•	•	•
Tallwave R420	420 W	12,4 kg	1020 x 400 x 19 mm	•	•	•
Largewave R600	630 W	19,5 kg	1020 x 620 x 19 mm	•	•	•
Longwave R800	830 W	21,5 kg	1620 x 440 x 19 mm	•	•	•
XLargewave R900	890 W	28 kg	1220 x 720 x 19 mm	•	•	•

REDWELL EDITION



MOTIFS



Edition 1

Edition 2

Edition 3



Edition 4

Edition 5

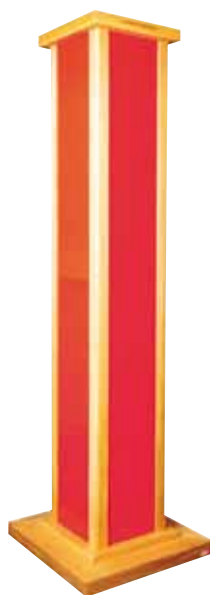
Edition 6

MODEL	WATTAGE	WEIGHT	SIZE	SURFACE	FRAME		
				PICTURE	ALU	WHITE	WOOD
RE910	910 W	17,3 kg	925 x 925 x 17 mm	•	•		

FURNITURE/STAND MODEL



Shelves 700, Frame white, layered plastic, birch plywood



Skywave, oak natural, red



Standmodell, Massive oak, white



Sittingwave, Birch plywood

TYPES OF WOOD

Standmodell

- Varnished birch plywood
- Varnished massive oak
- Natural dark

Skywave

- Maple natural or black stained
- Oak natural or nut stained

Sittingwave

- Birch plywood natural
- Birch plywood black stained

MODEL	WATTAGE	WEIGHT	SIZE	SURFACE			
				WHITE	RED	BLUE	BLACK
Shelves 700	700 W	50 kg	1910 x 820 x 350 mm	•			
Skywave	1100 W	45 kg	300 x 300 x 1600 mm Pedestal 550 x 550 mm	•	•	•	
Standmodell S600	630 W	15 kg	1070 x 700 x 60 mm	•	•	•	
Standmodell S900	890 W	20 kg	1270 x 800 x 60 mm	•	•	•	
Sittingwave, 2 or 4 heat surfaces	185/370 W	20 kg	700 x 700 x 520 mm	•			•

FRAMELESS-HEATING PANELS



Wellina, white structured



Round, white structured

MODEL	WATTAGE	WEIGHT		SIZE		SURFACE	
		WHITE	MIRROR	WHITE	MIRROR	WHITE	MIRROR
WE250	250 W	5,8 kg		705 x 305 x 18 mm		•	
WE420	420	10 kg		1006 x 386 x 18 mm		•	
WE600	630 W	14,5 kg		1006 x 606 x 18 mm		•	
WE800	830 W	16,5 kg		1606 x 426 x 18 mm		•	
WE900	890 W	19,8 kg		1206 x 706 x 18 mm		•	
WE1100	1100 W	22 kg		1606 x 606 x 18 mm		•	
WE1400	1400 W	36,8 kg		2006 x 806 x 18 mm		•	
Smallround	310 W	5,8 kg		Diameter 580 x 17 mm		•	
Middleround	400W	8,5 kg	12,5 kg	Diameter 710 x 17 mm	Diameter 730 x 19 mm	•	•
Largeround	610 W	12,6 kg	18,7 kg	Diameter 900 x 17 mm	Diameter 920 x 19 mm	•	•

CEILING RADIATORS



Power-Heater



Rollingwave, bronze

MODEL	WATTAGE	WEIGHT	SIZE	SURFACE				
				WHITE	BLACK	BRONZE	SILVER	GOLD
Power-Heater	1800 W	7,6 kg	543 x 543 x 110 mm		•			
Rollingwave Rondo	1000 W	10,4 kg	Diameter 500 mm	•		•	•	•